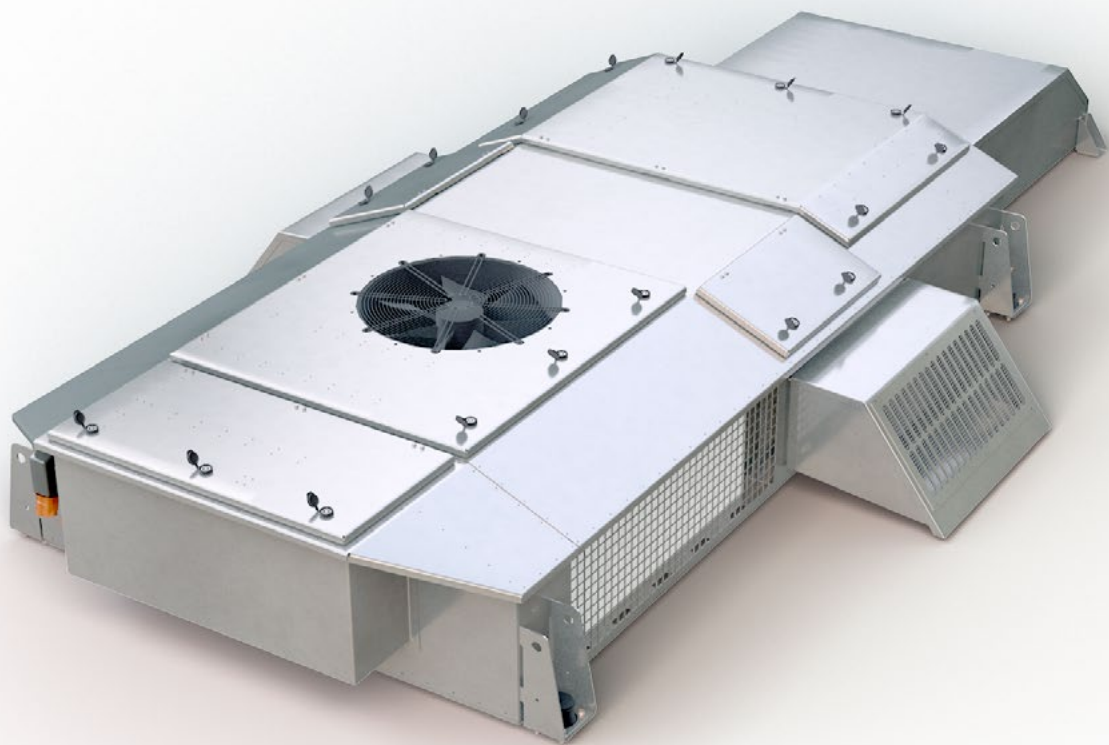


RVKE 225-D

Regional train saloon unit HVAC

Plug-in air conditioning unit for roof mount on coaches. Especially designed for the requirements of this application it offers proven reliability and performance.



Technical data

RVKE 225-D Regional train saloon unit HVAC

Customer Platform	Stadler Pankow GmbH Flirt
City of operation	Berchtesgaden / Salzburg
Cooling capacity	25,0 kW
Heating capacity	14,0 kW
Air Flow	1500-2800 m ³ /h
Length Width Height	3115 mm 2626 mm 586 mm
Weight	615 kg
Power supply	400 V-3-16 2/3 Hz 400 V-3-50 Hz 24 V DC
Summer conditions - outside	35 °C
Winter conditions - outside	-20 °C

