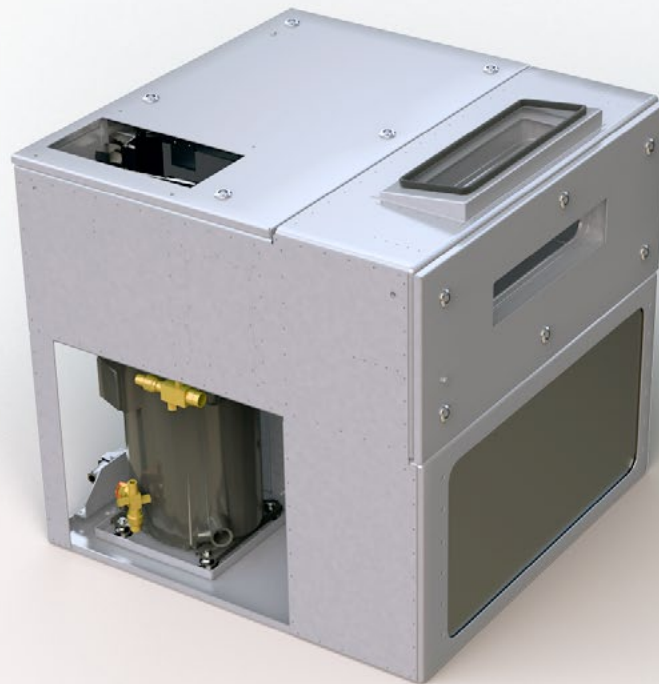


# RVKE 16-E

## Regional Train Driver's Cab HVAC

---

Plug-in air conditioning unit for underfloor mount on driver cabs. Especially designed for the requirements of this application it offers proven reliability and performance.



# Technical data

## RVKE 16-E Regional Train Driver's Cab HVAC

<b>Customer   Platform</b>	Stadler Pankow GmbH   Flirt
<b>City of operation</b>	Berchtesgaden / Salzburg
<b>Cooling capacity</b>	5,6 kW
<b>Heating capacity</b>	4,0 kW
<b>Air Flow</b>	300-800 m <sup>3</sup> /h
<b>Length   Width   Height</b>	800 mm   800 mm   750 mm
<b>Weight</b>	147 kg
<b>Power supply</b>	400 V-3-50 Hz 24 V DC
<b>Summer conditions</b> - outside	35 °C
<b>Winter conditions</b> - outside	-20 °C

